

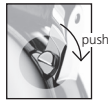
**JB**  
1735  
**BLANCPAIN**  
MANUFACTURE DE HAUTE HORLOGERIE

Your watch

**ULTRA-SLIM, DATE, RETROGRADE SMALL SECONDS,  
UNDER-LUG CORRECTOR, SELF-WINDING  
CALIBRE 7663Q, UP TO 65-HOUR AUTONOMY.**



6653Q



Under-lug corrector

**THE CROWN HAS TWO DISTINCT POSITIONS:**

**Position A**, crown in manual-winding position.

**Position B**, crown pulled out to time-setting position, enabling adjustment of the hours and minutes.

Push the crown back in to position A once the time has been set.

**FAST DATE ADJUSTMENT:**

**Corrector 1**, located under the lug at 5 o'clock, may be activated using a finger and serves to correct the date rapidly.

## TRIPLE-BLADE FOLDING CLASP (WITH PRONG)

Only Blancpain straps specially designed for this folding clasp should be used. For your safety and comfort, we advise you to have your new clasp fitted by an authorised Blancpain retailer. You can always then adjust the length of the wristband yourself.

### OPENING

To open the fastening, place one finger on each side of the clasp and pull it upwards (Fig. 1). Proceed in the same manner to open the other blade (Fig. 2).



Fig. 1

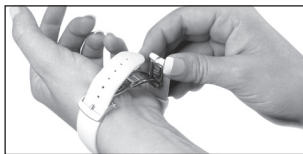


Fig. 2

### CLOSING

Slip your Blancpain watch on your wrist and close the folding blades as indicated on figures 3 and 4.



Fig. 3



Fig. 4

### ADJUSTING THE STRAP:

Slide the section of the strap into the clasp and insert the prong into the desired hole (Fig. 5). Move the prong to another hole if necessary.



Fig. 5

### IMPORTANT

**Please do not pull the end of the strap upward to open the fastening, or the prong may drop from the hole and damage the watch.**