

**JB**  
1735  
**BLANCPAIN**  
MANUFACTURE DE HAUTE HORLOGERIE

Your watch

**ULTRA-SLIM LADYBIRD, SELF-WINDING  
CALIBRE 6150, UP TO 40-HOUR AUTONOMY.**



**0063-1997**



**0063C**



**0063E**



**0063F**

The **0063C**, **0063E** and **0063F** watch models are adjusted in the same way.

**THE CROWN HAS TWO DISTINCT POSITIONS:**

**Position A**, crown in manual-winding position.

**Position B**, crown pulled out to time-setting position, enabling adjustment of the hours and minutes.

Push the crown back in to position A once the time has been set.

For instructions regarding the charms, kindly refer to page 29 of this manual.

## CHARMS

Each Ultra-Slim Ladybird watch is delivered with a removable charm. It is also possible to acquire additional charms separately. Be careful to remove the watch from your wrist before changing charm.

To secure the charm in place, give a 90° twist to the strap sections at 6 and 12 o'clock in order to release the catch (Fig. 1), grasp the charm with its fastener open in an upwards direction, place fastener on the catch and press the latter until you feel it click (Fig. 2) and then reposition the charm on the strap section (Fig.3).

To remove the charm, give a 90° twist to the strap sections at 6 and 12 o'clock in order to release the catch (Fig. 4), pull the charm upwards (Fig. 5) and tug it to remove the charm from the catch (Fig. 6).



Fig. 1

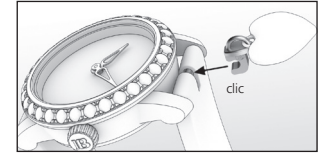


Fig. 2



Fig. 3

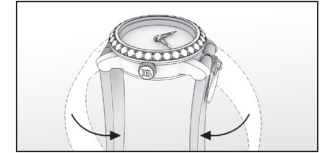


Fig. 4

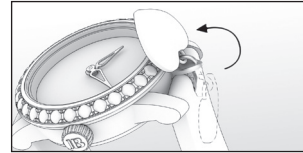


Fig. 5

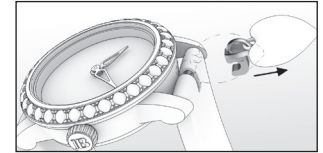


Fig. 6